

Flexsul-Seal Specs

Exterior skin consists of 50 mil Polyethylene Corrugated Tubing

Exterior skin complies with ASTM F405-97 for H.D. tubing

All Pex Tubing Meets Applicable Standards.

Color Coded Pex Tube Available

3/4" & 1" PEX-AL-PEX Available

3/4" - 1" - 1 1/4" Pex Tube Available

Thermal Insulation Properties

Operating Range: -297 degree F to 220 degree F

>90 % Closed Cell

.02 % Water Absorption by volume

.10 Water Vapor Permeability

Passes Flame Spread of 25 as tested by ASTM E 84

Meets requirements of ASTM C 411 for Hot Surface performance of High Temperature Thermal Insulation

R-Value = 6 per inch

Non-Porous, Non Fibrous Insulation resists mold growth

3 lb/ft — 6 lb/ft Density



Flexibility limited only by interior PEX tubing.

Distributed by:

Flexsul-Seal Advantages

Lightweight - Easier Handling

High Flexibility

5" I.D. - Increased Insulation Protection

50% more insulation area than 4"

Thermal Dead Air Pocket resulting in increased R-Value

Decrease Labor Costs

Joint-Free Installation

Lighter Weight = Lower Transportation Costs

Each Coil includes: 1 - 5" Coupling; 1 - Roll Tape; 4 - Insulated end caps. End cap sealing adhesive will be provided as needed.



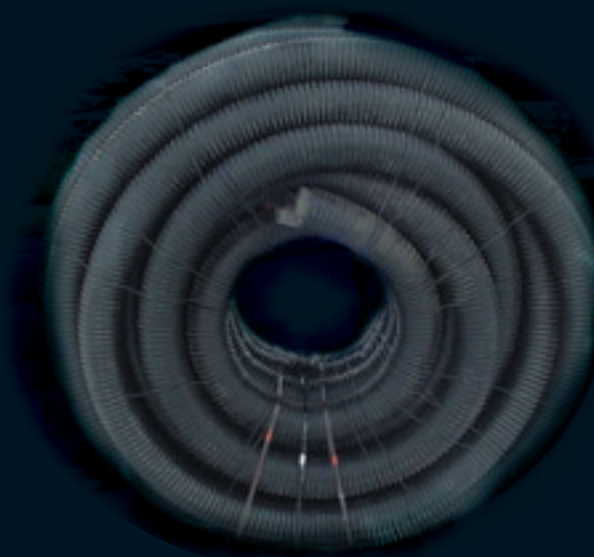
Flexsul-Seal™

by

Insul-Seal®
INSULATED PVC

217 Harrison Avenue North
Box 68
Racine, Minnesota 55967
(507) 378-4131
FAX (507) 378-7151
EMAIL- insulate@hmtel.com
www.insulseal.com
www.flexsulseal.com

Insulated pipe just got flexible. Flexsul-Seal by Insul-Seal



Flexsul-Seal™ by **Insul-Seal®**
INSULATED PVC

The characteristics that make rigid Insul-Seal a superior insulator for hot water lines has finally been translated into a flexible version retaining the positive benefits of the original product.

Flexsul-Seal is an elastomeric thermal insulation used to retard heat loss in hot water plumbing and dual hot waterline systems. The Flexsul-Seal system is designed to trap dead air, within an expanded closed cell structure, thus increasing its total R-Value and reducing Heat loss in cold underground burial. Thermal performance is achieved by sealing the 2 5/8" centered air space, in effect reducing the flow of air and increasing the total R-Value of 6 by an additional factor of 5-9.

Pex tubing carrying hot water needs room to expand and contract. Without needed space to expand, Pex tubing can pull and add unneeded stress at its connections. With the Flexsul-Seal system Pex waterlines have sufficient room to expand and contract with no stress added to connection ends.

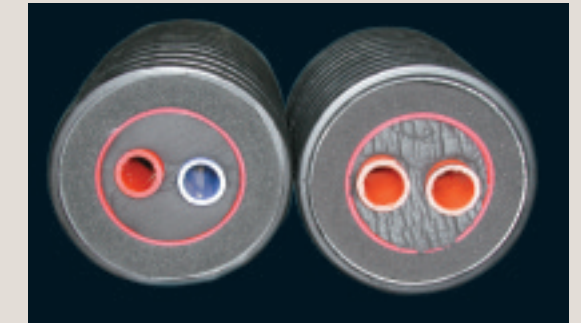
For your Outdoor furnace installation it only makes sense to use a quality product.

Outdoor wood Boilers can only operate at peak performance when used with a quality insulated piping system. A poor quality insulated system will require substantially more wood and also reduce the amount of heat delivered to heat your home. Flexsul-Seal carries along the tradition of high quality and high standards already established by its manufacturer, Insul-Seal Insulated PVC.

Now you have another choice!

The following chart gives examples of performance at some typical installation parameters.
Contact us for expected performance on your particular installations.
Calculations based on the German 'VDI-Richtlinien' VDI 2055, July 1994.

Pipe Size	Ambient Temp.	Med. Temp.	Flow Rate	Trench Length	Heat Loss
3/4"	-10	170	5	100'	1.946
3/4"	-10	180	5	100'	2.072
3/4"	0	170	5	100'	1.854
3/4"	0	180	5	100'	1.976
3/4"	10	170	5	100'	1.756
3/4"	10	180	5	100'	1.878
3/4"	20	170	5	100'	1.657
3/4"	20	180	5	100'	1.779
3/4"	32	170	5	100'	1.537
3/4"	32	180	5	100'	1.658
1"	-10	170	5	100'	2.258
1"	-10	180	5	100'	2.399
1"	0	170	5	100'	2.146
1"	0	180	5	100'	2.287
1"	10	170	5	100'	2.033
1"	10	180	5	100'	2.174
1"	20	170	5	100'	1.918
1"	20	180	5	100'	2.059
1"	32	170	5	100'	1.778
1"	32	180	5	100'	1.919
1 1/4"	-10	170	5	100'	2.557
1 1/4"	-10	180	5	100'	2.716
1 1/4"	0	170	5	100'	2.431
1 1/4"	0	180	5	100'	2.590
1 1/4"	10	170	5	100'	2.302
1 1/4"	10	180	5	100'	2.462
1 1/4"	20	170	5	100'	2.172
1 1/4"	20	180	5	100'	2.332
1 1/4"	32	170	5	100'	2.014
1 1/4"	32	180	5	100'	2.173



Carrier pipe available with non-barrier or barrier tubing.
 Barrier PEX eliminates oxygen from entering the system.

Flexsul-Seal™
 by
Insul-Seal®
 INSULATED PVC